

T H E W O R K O F
LINE+GRADE

presented to Sun Tribe Solar

Example Cut and Fill Analysis on a Rural Property.
Topographic information generated from LiDAR.

The following images were developed for a client who owns a rural property and wanted to develop a practice polo field. The primary objective was to balance cut and fill and maximize the playable surface based on existing topographic and physical constraints.

It is noteworthy to express that the following images and reports are all generated from the same Civil3D dataset. So even though the display of information changes from image to image, the dataset is consistent. This is a strong feature of the Civil3D platform.

WATER PROTECTION
ORDINANCE BUFFER

EX. TREELINE

EX. STEEP SLOPES

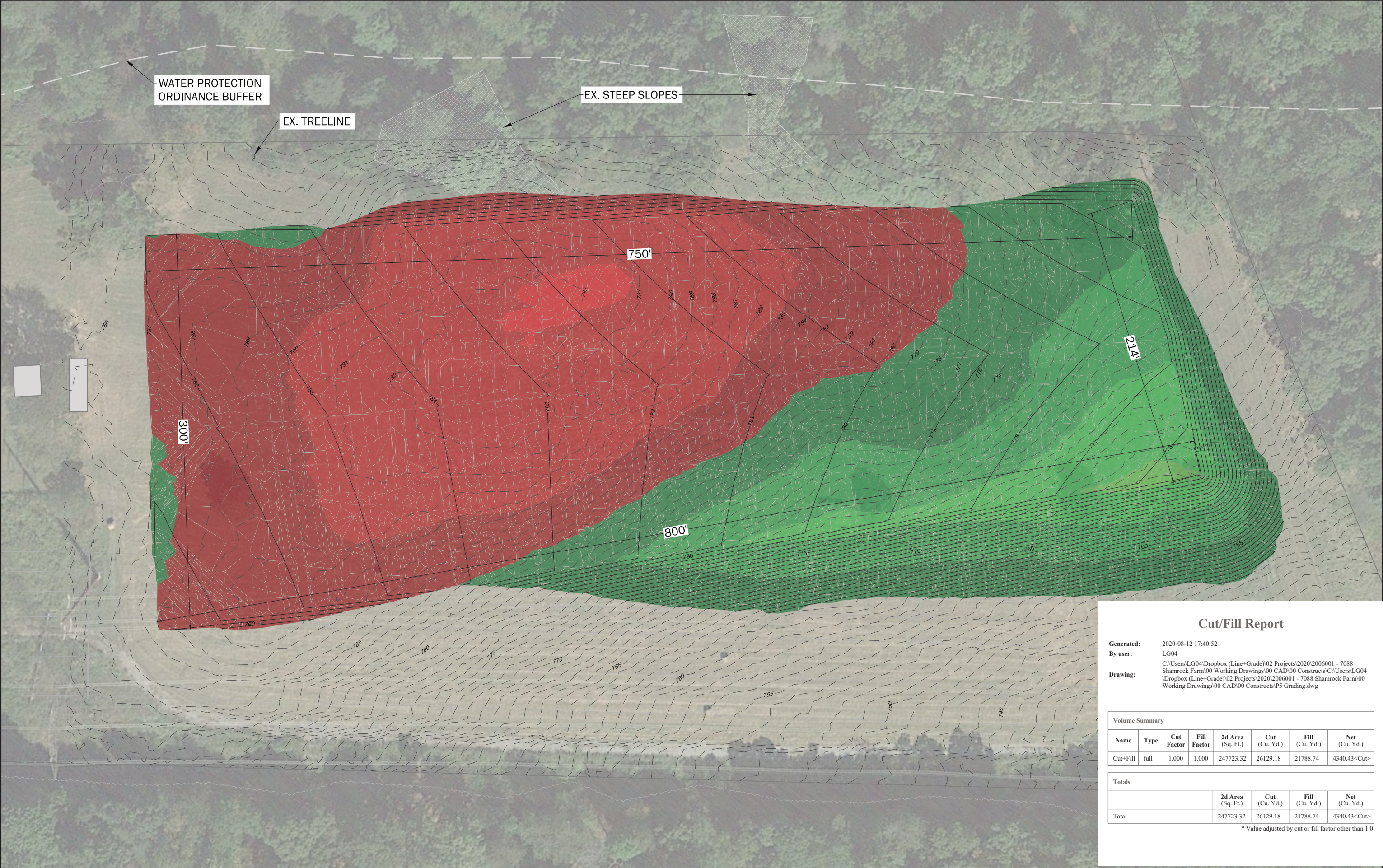
300'

750'

800'

214'





Cut/Fill Report

Generated: 2020-08-12 17:40:52
By user: LG04
C:\Users\LG04\Dropbox (Line+Grade)\02 Projects\2020\2006001 - 7088 Shamrock Farm\00 Working Drawings\00 CAD\00 Constructs\C\Users\LG04\Dropbox (Line+Grade)\02 Projects\2020\2006001 - 7088 Shamrock Farm\00 Working Drawings\00 CAD\00 Constructs\IP5 Grading.dwg
Drawing:

Volume Summary							
Name	Type	Cut Factor	Fill Factor	2d Area (Sq. Ft.)	Cut (Cu. Yd.)	Fill (Cu. Yd.)	Net (Cu. Yd.)
Cut+Fill	full	1.000	1.000	247723.32	26129.18	21788.74	4340.43<Cut>

Totals				
	2d Area (Sq. Ft.)	Cut (Cu. Yd.)	Fill (Cu. Yd.)	Net (Cu. Yd.)
Total	247723.32	26129.18	21788.74	4340.43<Cut>

* Value adjusted by cut or fill factor other than 1.0